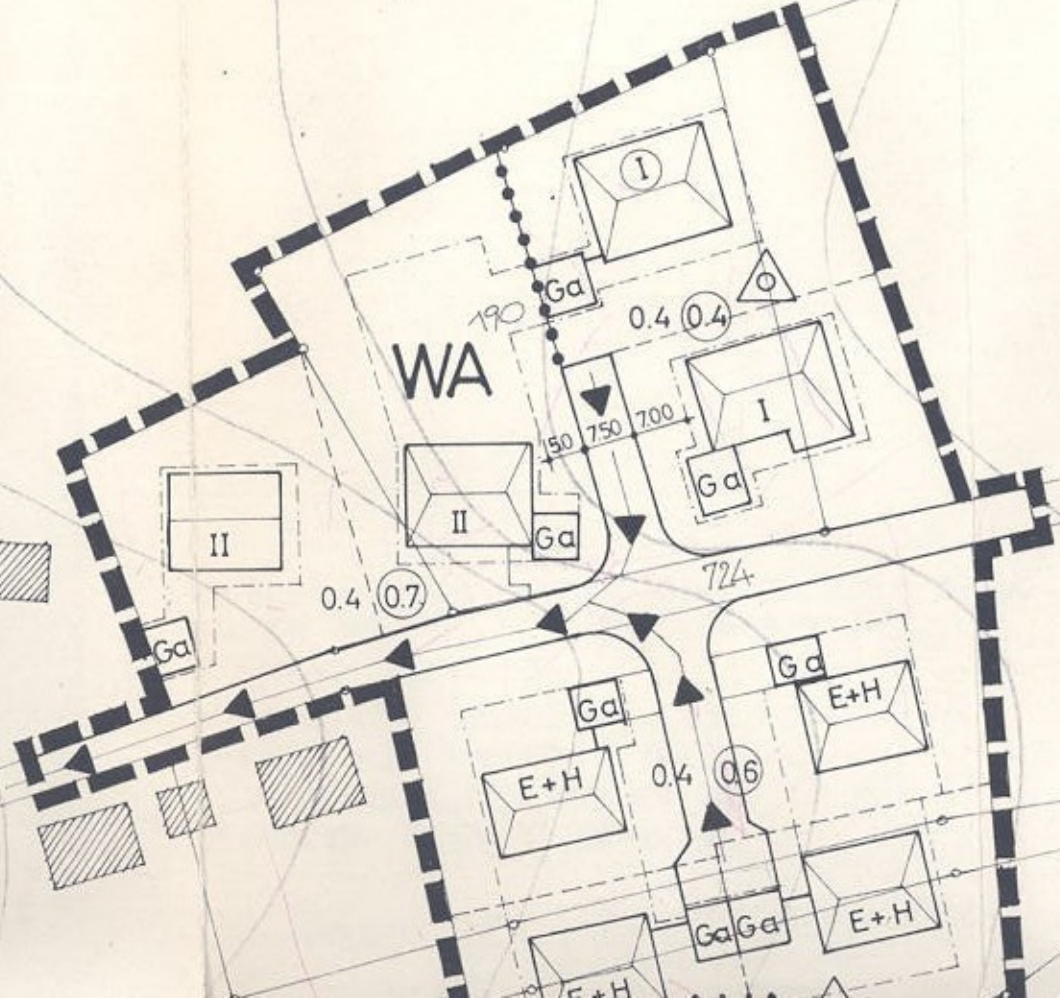




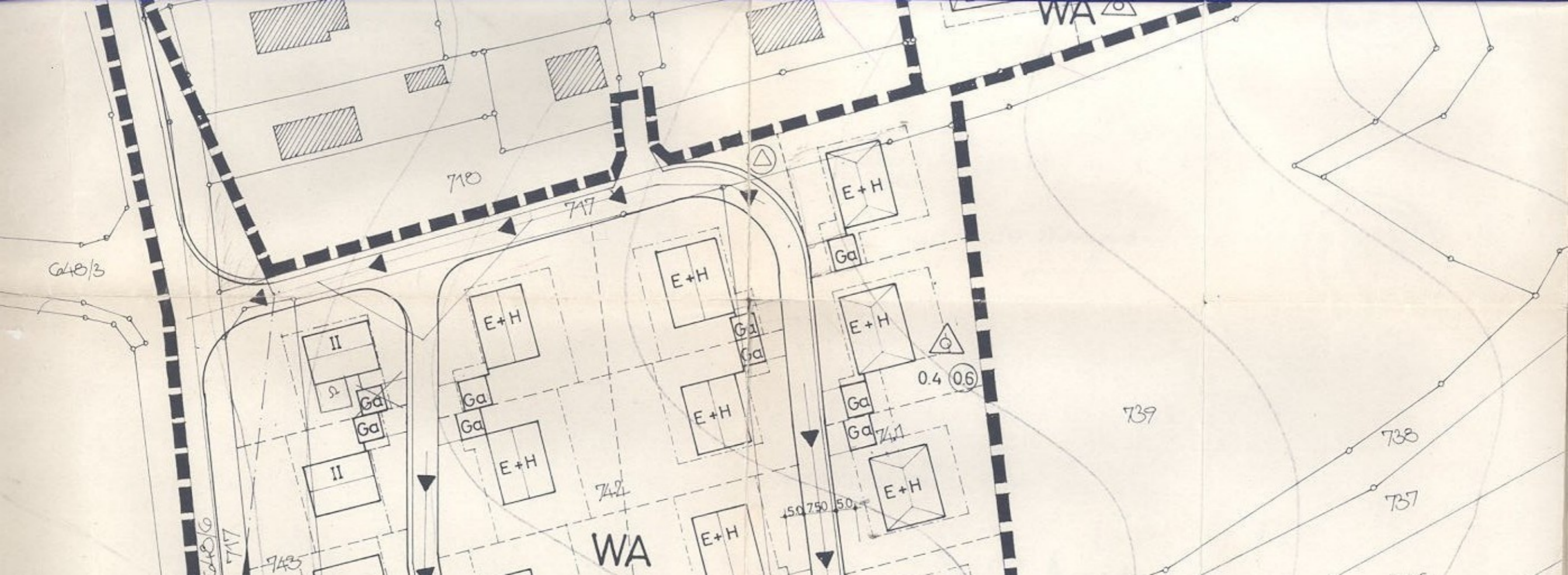
E



191



717



G48/3

710

717

II

Ga

Ga

II

G48/6

717

743

E+H

Ga

Ga

E+H

742

WA

E+H

Ga

Ga

E+H

E+H

E+H

Ga

E+H

Ga

Ga

E+H

741

50.750 50.4

0.4 (0.6)

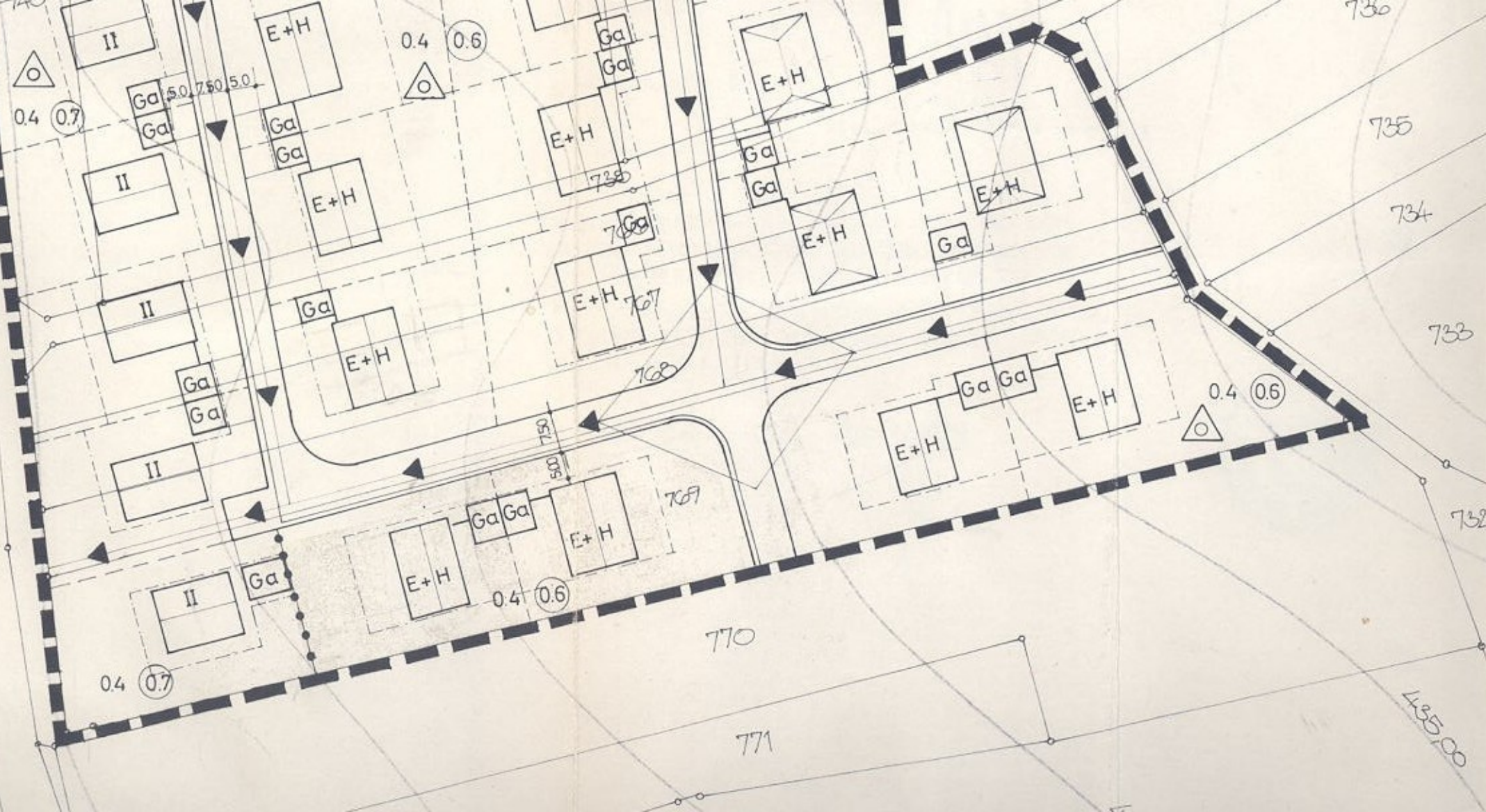
WA

739

738

737

STADTSTRASSE 2027



0.4 (0.7)

0.4 (0.6)

0.4 (0.7)

0.4 (0.6)

0.4 (0.6)

730

735

734

733

732

770

771

768

767

769

435.00

II

E+H

Ga

E+H

II

E+H

E+H

E+H

E+H

II

E+H

E+H

E+H

E+H

II

E+H

E+H

E+H

II

E+H

E+H

Ga

Ga

Ga

Ga

Ga

Ga

Ga

Ga

Ga

Ga

Ga

Ga

Ga

5.0 7.50 5.0

7.50

5.0